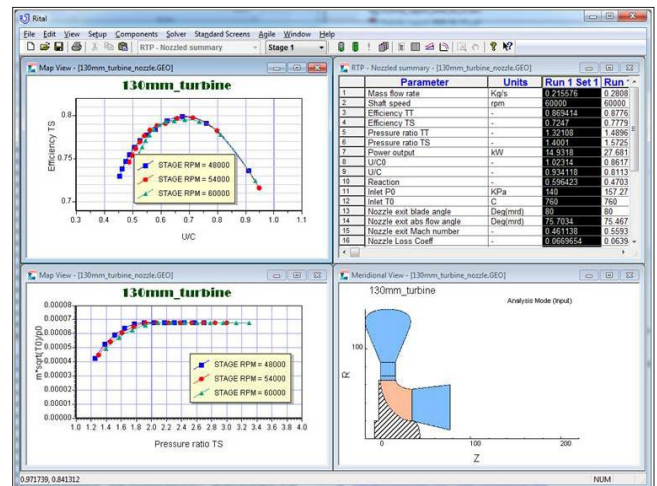


RITAL™

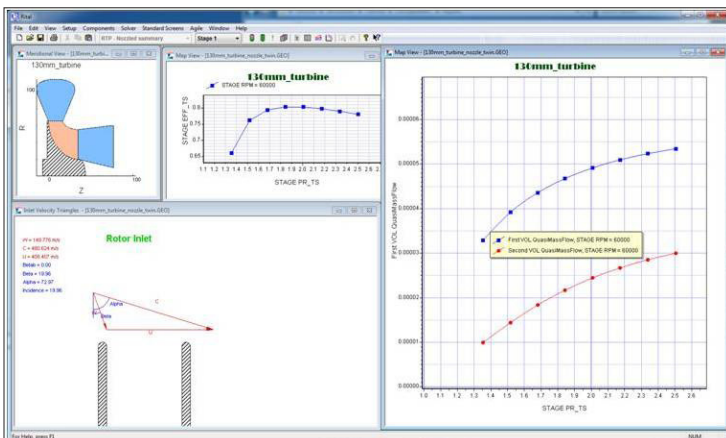
A MEANLINE APPROACH IS USED TO DESIGN RADIAL and mixed-flow turbines, Concepts NREC's RITAL™ CAE software program is used to design the turbine stage, analyze performance, refine parameters with data reduction, and model the machine according to several performance models. RITAL's unique Design Wizard leads the user through all the steps necessary for design, analysis, and data reduction. The meanline turbine design can easily migrate into the AxCent® program for further blade design and fluid dynamic analysis.

Components Supported by RITAL

- Inlet Volutes
- Rotors
- Nozzles
- Exhaust Diffusers



Multipoint performance analysis of a turbine with nozzle and diffuser.



Twin scroll multipoint performance analysis.

Modeling

RITAL has built-in models for inlet volutes, rotor and nozzle diffusion/losses, disk friction, and other losses related to subsonic turbine performance. The same consistent model is used in both the design and analysis modes of RITAL.

Integrated Performance Map Plotting

Review design performance, analysis, and test data with performance maps that are flexibly plotted and updated automatically with each geometric change.

Easy Editing

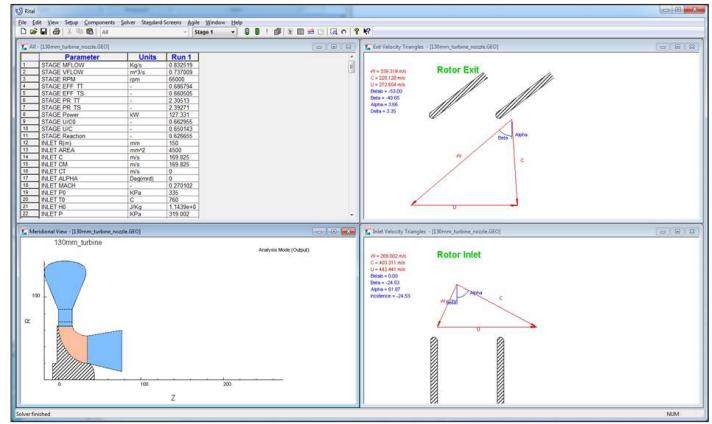
View the turbine stage in an active, true-scale meridional view. Edit the parameters by double clicking on the component in the meridional view. Also, edit parameters using a single text input/output file, a feature especially useful for optimization.

Table View of Results

View the results in a flexible, spreadsheet-like table format, customizable through separate filters. Create any number of filters, select what to display, and customize the labels as well.

A Real Fluid Program

RITAL calculates Real Fluid properties using optional D.B. Robinson Real Fluid Properties, NIST, or ASME steam routines. Users can also incorporate their own proprietary fluid properties.



RITAL single-point calculation.

Axial View with Velocity Triangles

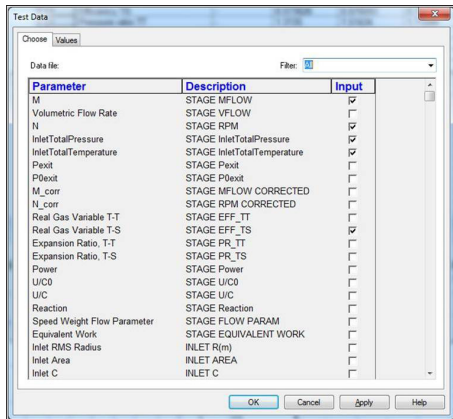
View blades and velocity triangles at the rotor inlet and exit in a window view.

OLE Automation Support

Control RITAL from an external program through industry-standard Object Linking and Embedding (OLE) automation, which supports full control of data entry, program execution, and result retrieval. External programs can be written in Visual Basic®, Visual C++®, FORTRAN, Python® or other languages that support the Microsoft® OLE standard.

Direct Integration with AxCent®

Start AxCent automatically from inside RITAL, which transfers the initial geometry automatically to AxCent for 3D geometry generation, rapid loading analysis, through-flow analysis, and output for CFD and FEA stress analysis. Changes in AxCent that affect the meanline analysis will cause the meanline analysis to be rerun and all performance maps to be regenerated.



Import test data for overlays.

Agile Engineering Design System® Applications

		Radial Compressors	Fans & blowers	Turbines	Axial Compressors	Pumps	Fans & blowers	Turbines
Preliminary design	COMPAL®	✓						
	PUMPAL®		✓					✓
	RITAL™				✓			
	FANPAL™			✓				✓
Detailed design	AXIAL™					✓	✓	✓
	AxCent®	✓	✓	✓	✓	✓	✓	✓
CFD	Pushbutton CFD®	✓	✓	✓	✓	✓	✓	✓
FEA	Pushbutton FEA™	✓	✓	✓	✓	✓	✓	✓
Optimization	TurboOPT II™	✓	✓	✓	✓	✓	✓	✓
CAM	MAX-PAC™	✓	✓	✓	✓	✓	✓	✓

CORPORATE HEADQUARTERS

217 Billings Farm Road
White River Junction, VT 05001-9486 USA
Phone (802) 296-2321 • Fax (802) 296-2325
E-mail: sales@ConceptsNREC.com
Web: www.ConceptsNREC.com

BOSTON OFFICE

285 Billerica Road, Suite 102
Chelmsford, MA 01824-4174 USA
Phone: (781) 935-9050 • Fax: (978) 596-0622

CONCEPTS NREC

Agile Engineering Design System, AxCent, AXIAL, COMPAL, FANPAL, MAX-PAC, PUMPAL, Pushbutton CFD, Pushbutton FEA, RITAL, and TurboOPT II are registered trademarks or trademarks of Concepts ETI, Inc. Other company, product or service names may be trademarks of their respective owners.

Concepts NREC design software is compatible with all commercial design packages.