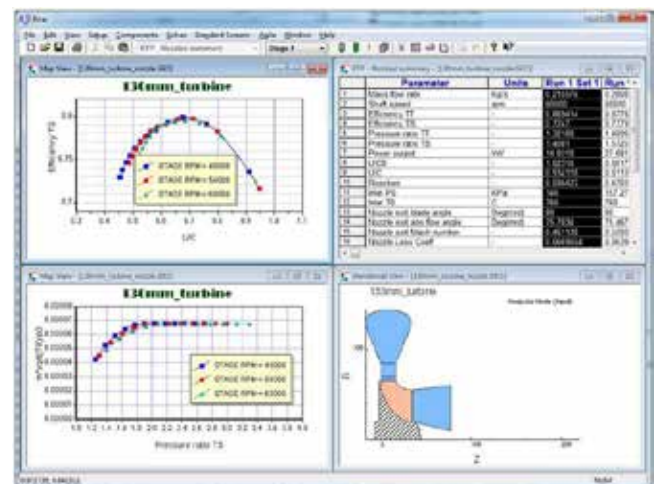


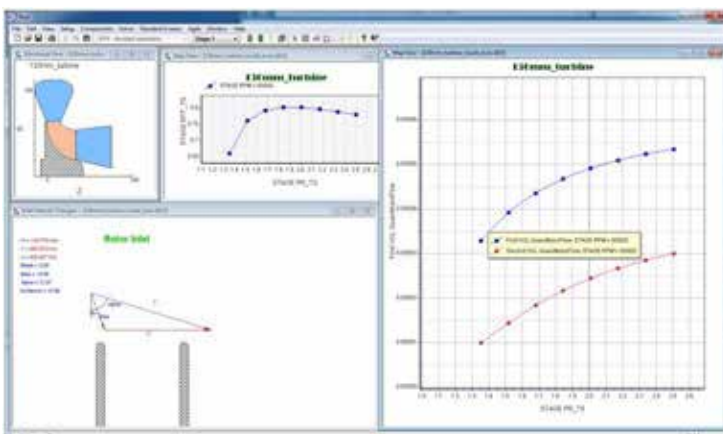
RITAL™

Components Supported by RITAL

- Inlet Volutes
- Rotors
- Nozzles
- Exhaust Diffusers



Multipoint performance analysis of a turbine with nozzle and diffuser.



Twin scroll multipoint performance analysis.

Modeling

RITAL has built-in models for inlet volutes, rotor and nozzle diffusion/losses, disk friction, and other losses related to subsonic turbine performance. The same consistent model is used in both the design and analysis modes of RITAL.

Integrated Performance Map Plotting

Review design performance, analysis, and test data with performance maps that are flexibly plotted and updated automatically with each geometric change.

Easy Editing

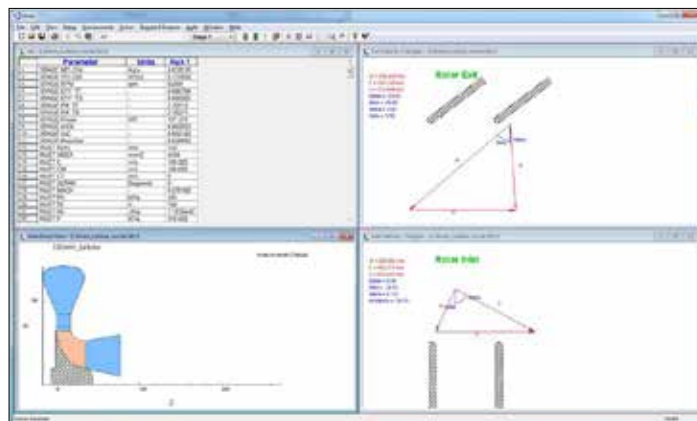
You can view the turbine stage in an active, true-scale meridional view. Edit the parameters by double-clicking on the component in the meridional view. Also, edit parameters using a single text input/output file, a feature especially useful for optimization.

Table View of Results

View the results in a flexible, spreadsheet-like table format, customizable through separate filters. Create any number of filters, select what to display, and customize the labels as well.

A Real Fluid Program

RITAL calculates Real Fluid properties using optional D.B. Robinson Real Fluid Properties, NIST, or ASME steam routines. Users can also incorporate their own proprietary fluid properties.



RITAL single-point calculation.

Axial View with Velocity Triangles

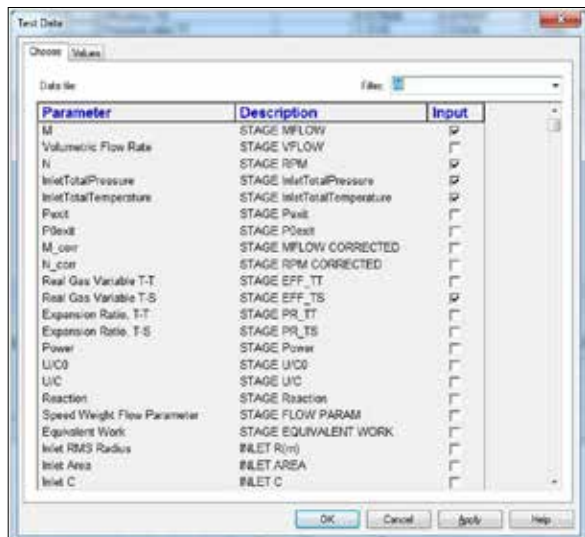
View blades and velocity triangles at the rotor inlet and exit in a window view.

OLE Automation Support

Control RITAL from an external program through industry-standard Object Linking and Embedding (OLE) automation, which supports full control of data entry, program execution, and result retrieval. External programs can be written in Visual Basic®, Visual C++®, FORTRAN, Python® or other languages that support the Microsoft® OLE standard.

Direct Integration with AxCent®

Start AxCent automatically from inside RITAL, which transfers the initial geometry automatically to AxCent for 3D geometry generation, rapid loading analysis, throughflow analysis, and output for CFD and FEA stress analysis. Changes in AxCent that affect the meanline analysis will cause the meanline analysis to be rerun and all performance maps to be regenerated.



Import test data for overlays.

		Radial		Axial		Turbine	
		Compressors	Pumps	Compressors	Pumps	Compressors	Pumps
Concepts NREC's Agile Engineering Design System®							
CAE Preliminary Design							
Meanline Approach	AXIAL™						
Meanline Approach	COMPAL™	✓					
Meanline Approach	FANPAL™		✓				
Meanline Approach	PUMPAL™			✓			
Meanline Approach	RITAL™				✓		
CAE Detailed Design							
3D Geometric Design	AxCent®	✓	✓	✓	✓	✓	✓
CFD Option for AxCent	FINE™/Turbo™	✓	✓	✓	✓	✓	✓
Pre- & Post-Processor for AxCent	psiPost™	✓	✓	✓	✓	✓	✓
FEA Option for AxCent	Pushbutton FEA™	✓	✓	✓	✓	✓	✓
CAE Specialized Design Software							
Gas Turbine Blade Cooling	CMADE™						✓
Optimization	TurboOPT II™	✓	✓	✓	✓	✓	✓
Rotor Dynamics	Dynbar®	✓	✓	✓	✓	✓	✓
Gas Turbine Cycle Analysis	GasTurb®	✓	✓	✓	✓	✓	✓
CAM Toolpaths							
Base Platform	MAX-PAC™	✓	✓	✓	✓	✓	✓
Flank Milling Option	MAX-S™	✓	✓	✓	✓	✓	✓
Point Milling Option	MAX-AB™	✓	✓	✓	✓	✓	✓
Closed Impeller Option	MAX-SI™	✓	✓	✓	✓	✓	✓
Single Blade Option	MAX-BB™	✓	✓	✓	✓	✓	✓
3+2 Roughing Option	3+2 Roughing	✓	✓	✓	✓	✓	✓

®Offered in partnership with NUMECA International® as part of the FINE/Agile™ integrated suite.



CORPORATE HEADQUARTERS

217 Billings Farm Road
White River Junction, VT 05001-9486 USA
Phone (802) 296-2321 • Fax (802) 296-2325
E-mail: sales@ConceptsNREC.com
Web: www.ConceptsNREC.com

Agile Engineering Design System, AxCent, AXIAL, COMPAL, FANPAL, MAX-PAC, PUMPAL, Pushbutton FEA, RITAL, and TurboOPT II are registered trademarks or trademarks of Concepts NREC, LLC. Other company, product or service names, including FINE/Turbo, may be trademarks of their respective owners.